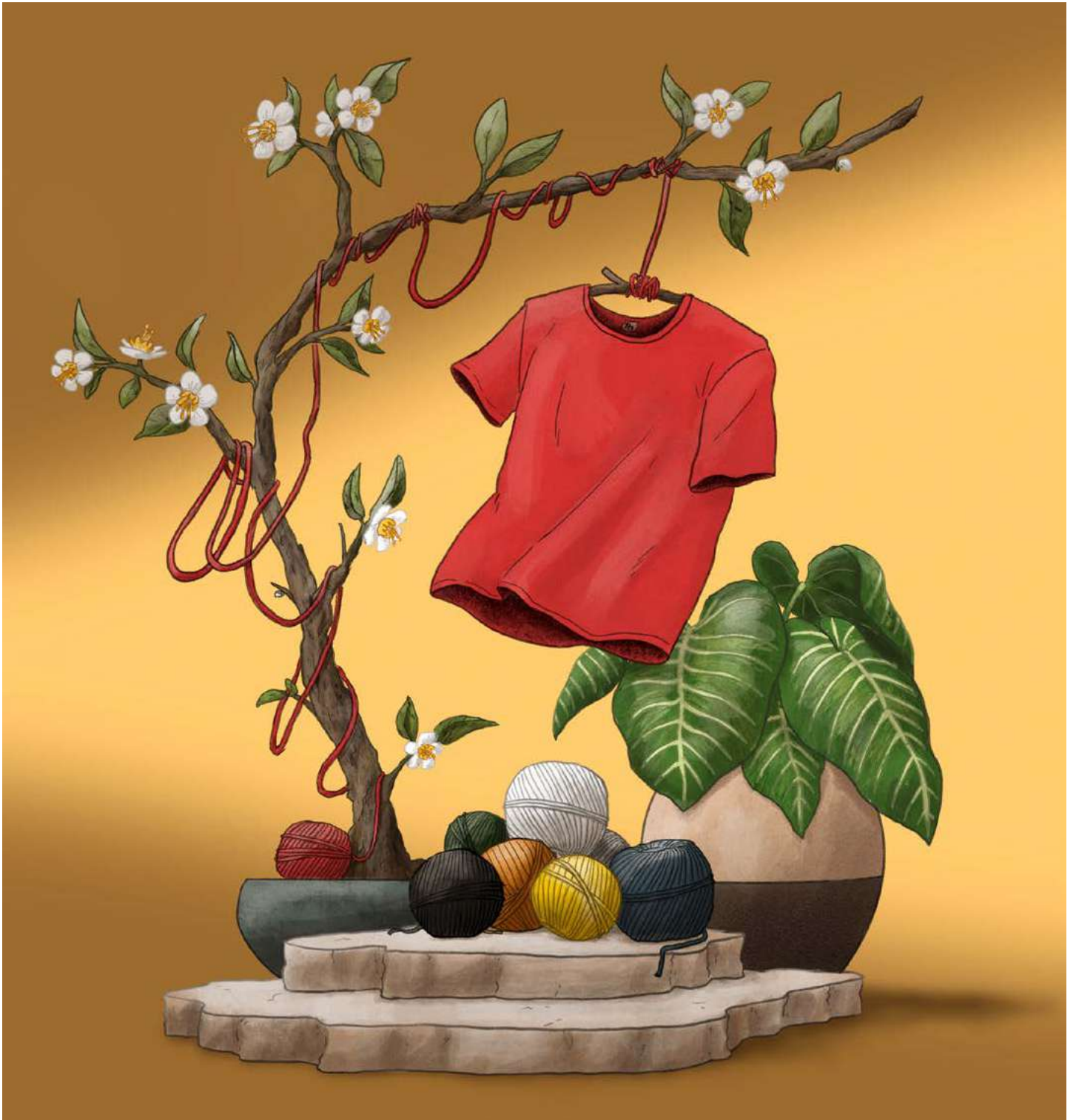


hi|dea™
keep it real

2023





Textile



TH Clothes® - The brand

TH Clothes® was created in 2006. The objective was to invest and provide innovative products of certified quality, based on sophisticated designs, colour diversity and an efficient and sustainable use of the resources applied. The brand's main premise is customer satisfaction, without neglecting social responsibility and commitment to quality. All products are OEKO-TEX® certified, since they comply with all the criteria required by STANDARD 100 by OEKO-TEX®. This certification is extremely important, since it guarantees to both customers and users the product safety.

EVENTS & PROMOTIONS

SPORTS & LOUNGE

SCHOOLS & KIDS

CORPORATIVE UNIFORMS

HIGH VISIBILITY

WORK CLOTHES

FASHION & BRANDS



Textile manufacture responsible and with quality assurance. Tested for use of nocive substances according to Oeko-Tex® Standard 100.



THC Ankara Women



100% cotton jersey Women's fitted T-shirt (190 g/m²) with carded cotton yarn (colour 183: 90% cotton and 10% viscose). Features a thin jersey collar with satin ribbon reinforcement. Piece cut and sewn with double seam sleeve cuff and hemline.

↕ Sizes: S, M, L, XL, XXL
 ↗ TRS – 240 x 200 mm

30113



30114



THC Ankara



Tubular t-shirt for men with a regular cut in jersey 100% cotton (190 g/m²) with carded cotton yarn (colour 183: 90% cotton/10% viscose). Features a 1x1 rib collar with jersey reinforcement ribbon and double seam on sleeves and hemline

↕ Sizes: XS, S, M, L, XL, XXL
 ↗ TRS – 280 x 200 mm

30109



30110





THC Fair



100% cotton t-shirt (150g/m²).
Environmentally friendly product.

📏 Sizes: S, M, L, XL, XXL

🔪 TRS – 280 x 200 mm

30279

106

30277

169 124 104 152 103

THC Fair Small



100% cotton t-shirt (150g/m²).
Environmentally friendly product.

📏 Sizes: XXXS, XXS

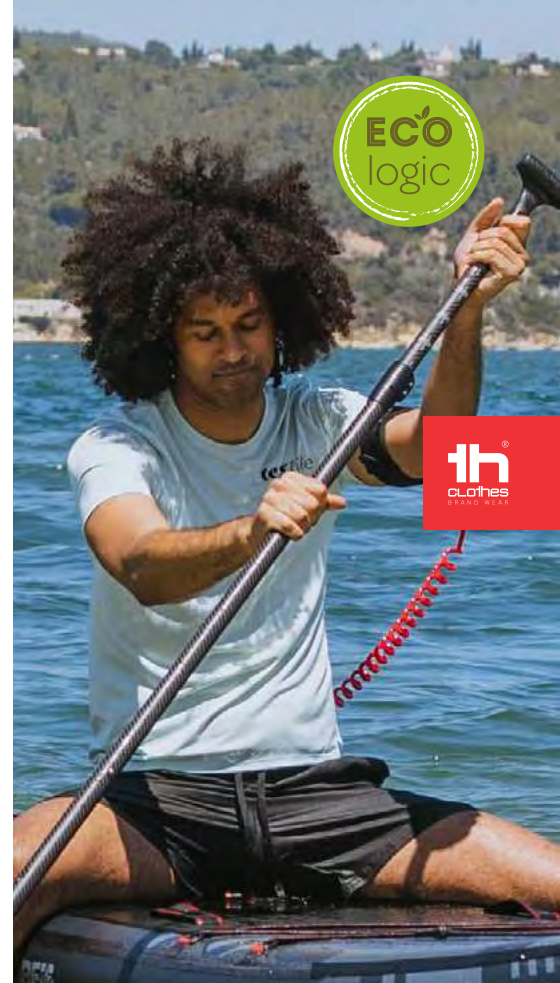
🔪 TRS – 200 x 200 mm

30289

106

30269

169 124 104 152 103



MADE IN EUROPE

THC Tube



Polyester (90%) and elastane (10%) t-shirt (190g/m²).
Made in Europe.

📏 Sizes: S, M, L, XL, XXL

🔪 TRS – 280 x 200 mm

30282

106

30281

124 154 152 122 108 169 103



th
clothes
BRAND WEAR

tex
tile

THC Sofia



Women's fitted T-shirt in 100% cotton jersey knit (150 g/m²) with carded cotton yarn (colour 183: 90% cotton/10% viscose; colour 196: 98% cotton/2% viscose). Features a thin double collar in jersey reinforced by a satin bias tape. Cut and sewn garment with double stitched sleeve and hemline.

↕ Sizes: S, M, L, XL, XXL

↗ TRS – 240 x 200 mm

30105



30106



THC Luanda



Tubular t-shirt for men with a regular cut in jersey 100% cotton (150 g/m²) with carded cotton yarn (colour 183: 90% cotton/10% viscose). Features a 1x1 rib collar with jersey reinforcement ribbon and double seam on sleeves and hemline.

↕ Sizes: XS, S, M, L, XL, XXL

↗ TRS – 280 x 200 mm

30101



30102



THC Athens Women



100% cotton women's jersey fitted t-shirt (150 g/m²) with carded cotton yarn (colours: 194, 195 and 199: 60% cotton/40% polyester). Contains a jersey collar with overlaid "V" neckline, reinforced inside with jersey ribbon. Piece cut and sewn with double seam on the sleeves and hemline

↕ Sizes: S, M, L, XL, XXL

↗ TRS – 240 x 200 mm

30117



30118



THC Athens



Tubular t-shirt for men with a regular cut in jersey 100% cotton (150 g/m²) with carded cotton yarn (colours: 194, 195 and 199: 60% cotton/40% polyester). Features a jersey collar with a reinforced "V" neckline inside with jersey ribbon. Double stitching on sleeves and hemline.

↕ Sizes: S, M, L, XL, XXL

↗ TRS – 280 x 200 mm

30115



30116





THC San Marino



Short-sleeved men's shirt made from 100% combed cotton pique (195 g/m²) (colour: 183: 85% cotton/15% viscose). Stylish and modern cut with thin collar and 1x1 Rib cuffs. Reinforced collar with pique bias, without label. Cut and sewn garment, with regular fit.

📏 Sizes: S, M, L, XL, XXL

🔪 TRS – 290 x 200 mm

30185



30186



THC Nicosia Women



Technical slightly fitted T-shirt with short sleeves for women in 100% polyester jersey knit (130 g/m²). Regular fit, with comfortable and breathable fabric. Reinforced collar with jersey and double stitched sleeves and hemline

📏 Sizes: S, M, L, XL, XXL

🔪 TRS – 240 x 200 mm

30193



30128



THC Nicosia



Technical short-sleeved men's T-shirt in 100% polyester mesh (130 g/m²). Regular fit, with comfortable and breathable fabric. Features reinforcement tape on the collar in jersey and double stitched sleeve and hemline

📏 Sizes: S, M, L, XL, XXL

🔪 TRS – 280 x 200 mm

30192



30127



THC Move



Polyester technical short sleeved adult shirt (150g/m²).

📏 Sizes: XS, S, M, L, XL, XXL

🔪 TRS – 280 x 200 mm

30274



30273





THC Bucharest Women



Long-sleeved fitted women's jersey shirt 100% cotton (150 g/m²) with carded cotton yarn (colours: 194, 195: 60% cotton/40% polyester; colour 183: 90% cotton/10% viscose). Modern cut with collar with jersey reinforcement band. Cut and sewn piece with double seam on sleeves and hemline.

📏 Sizes: S, M, L, XL, XXL

🔪 TRS – 240 x 200 mm

30125

106

30126

183 103 134 114 194 105 195

THC Bucharest



Long-sleeved men's t-shirt 100% cotton jersey (150 g/m²) with carded cotton yarn (colours: 194, 195: 60% cotton/40% polyester; colour 183: 90% cotton/10% viscose). Rib collar 1x1 and jersey reinforcement ribbon. Tubular T-shirt with regular cut and double seam on the sleeves and hemline

📏 Sizes: S, M, L, XL, XXL

🔪 TRS – 280 x 200 mm

30123

106

30124

114 134 194 105 195 183 103

THC Colombo



50% cotton and 50% polyester italian brushless fleece unisex sweatshirt (240 g/m²). Rib collar, cuffs and waistband and reinforcement ribbon inside the collar.

📏 Sizes: S, M, L, XL, XXL, 3XL

🔪 TRS – 290 x 200 mm

30265

106

30266

168 178 158 169 134 114
142 105 103 183

THC Rodrigo



Microfiber and rubber sole sneakers (unisex) in a sporty design. Customisable with patches of different colours, attached with the VELCRO system. Features decorative stitching in the heel area and 3 perforations in the inner area that allows for improved breathability of this comfortable sneaker.

↕ Sizes: 35 to 44

➤ SCR – 30 x 15 mm

30255



THC Ibiza



100% cotton men's sleeveless jersey (140 g/m²) with carded cotton yarn (colours: 194, 195 and 199: 60% cotton/40% polyester and colour 183: 90% cotton/10% viscose). Wide armholes and round collar, with bias tape on the armholes and neckline. Piece cut and sewn with double seam at the hemline

↕ Sizes: XS, S, M, L, XL, XXL

➤ TRS – 280 x 200 mm

30121

106

30122

103 183



THC Tirana



Sleeveless T-shirt for women in 100% cotton jersey knit (160 g/m²) with carded cotton yarn. Round collar and "T" shaped back. Cut and sewn garment with double stitched hem and bias on the armholes and neckline.

↕ Sizes: S, M, L, XL, XXL

➤ TRS – 240 x 200 mm

30119

106

30120

105 178 148 169 154 102 103





th
clothes
BRAND WEAR

THC Dhaka



100% carded cotton pique men's short sleeve polo (195 g/m²) (colour 183: 85% cotton/15% viscose). With elegant collar and rib sleeves, with a piqué reinforcement collar. Reinforced placket with 2 matching colour buttons (extra button inserted in the inner seam). Modern cut with a single welted pocket on the chest. Cut and sewn piece with small side open with side vents at the hemline of the polo.

📏 Sizes: S, M, L, XL, XXL

🔪 TRS – 100 x 60 mm

30209

106

30208

183 104 114 105 103



THC Adam



100% cotton carded piqué mesh short-sleeved men's polo (195 g/m²) (colour 183: 85% cotton/15% viscose). With a regular fit, this polo has rib collar and sleeves. The collar is reinforced with piqué ribbon. On the front, next to the collar, there are three matching colour buttons (extra button inserted in the inner seam). Piece cut and sewn with small side vents at the hem of the polo.

📏 Sizes: S, M, L, XL, XXL

🔪 TRS – 280 x 200 mm

30130

106

30131

111 128 168 108 118 121 158 116
119 109 149 124 189 154 114 104
134 152 115 105 196 183 113 103



THC Eve



100% carded cotton pique women's short sleeve polo (195 g/m²) (colour 183: 85% cotton/15% viscose). Features a rib collar and sleeves, the collar is reinforced with piqué ribbon. On the front, next to the collar, there are four matching colour buttons (extra button inserted in the inner seam). Piece cut and sewn.

📏 Sizes: S, M, L, XL, XXL

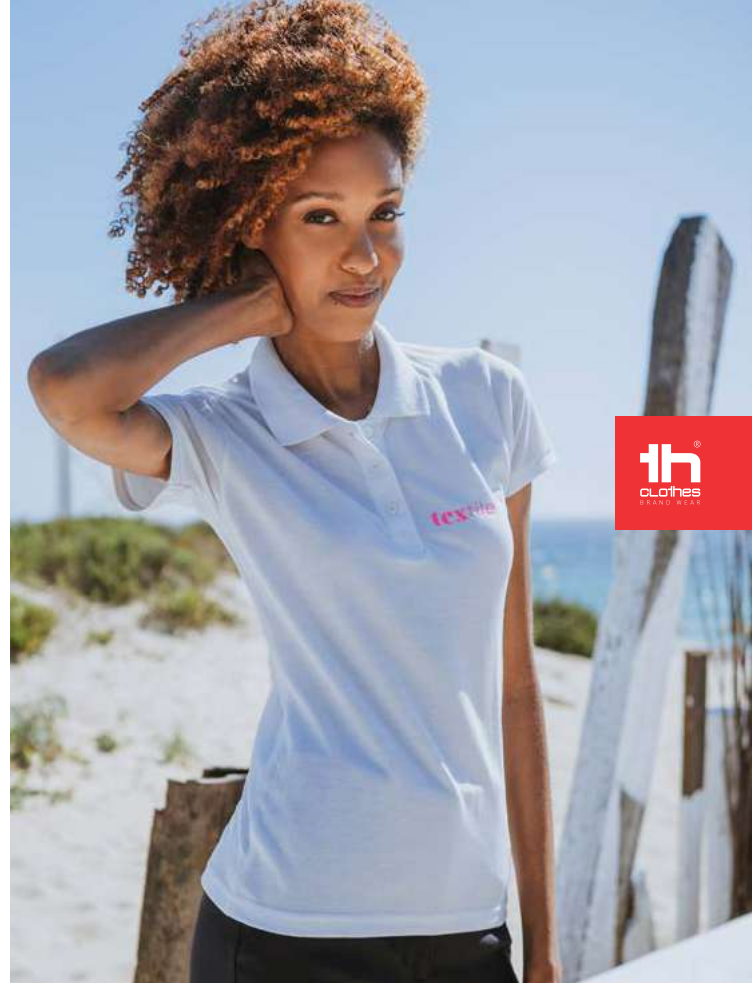
🔪 TRS – 240 x 200 mm

30134

106

30135

103 113 183 196 114 124 189
154 134 104 105 115 121 111
128 168 108 118 119 109 149



THC Berlin



Short sleeve polo shirt for men in piqué mesh 35% carded cotton and 65% polyester (200 g/m²). Colour 183: 85% cotton/15% viscose. Regular cut polo with rib collar and sleeves, the collar being reinforced with piqué knit ribbon. Features a reinforced collar with 3 matching colour buttons (extra button inserted in the inner seam). Piece cut and sewn.

📏 Sizes: XS, S, M, L, XL, XXL

🔪 TRS – 280 x 200 mm

THC Berlin Women



35% carded cotton and 65% polyester (200 g/m²) short-sleeve piqué mesh women polo shirt (200 g/m²) (colour: 183: 85% cotton/15% viscose). Fitted waist polo with rib collar and sleeves, the collar is reinforced with piqué knit ribbon. Contains a reinforced collar with 3 matching coloured buttons (extra button in the inner seam). Piece cut and sewn.

📏 Sizes: S, M, L, XL, XXL

🔪 TXP – 240 x 200 mm

30175

106

30263

106

30176

114 134 105 115 129 103 113 183

30264

103 113 183 114 134 115 105



THC Monaco Women



100% carded cotton (240 g/m²) short-sleeved pique women polo. Regular cut with collar and ribbon sleeves and pique collar reinforcement. Reinforced collar with 2 matching coloured buttons (extra button in the inner seam). Piece cut and sewn with small side openings at the bottom of the polo. The visible label is removable.

↕ Sizes: S, M, L, XL, XXL

↗ TXP – 240 x 200 mm

30261

106

30262

128 108 111 109 154
114 104 105 103 113 183



THC Monaco



Short-sleeved men's polo made 100% carded cotton (240 g/m²) (colour: 183: 85% cotton/15% viscose). Regular cut with collar and ribbon sleeves and pique collar reinforcement. Reinforced collar with 3 matching colour buttons (extra button inserted in the inner seam). Piece cut and sewn with small side openings at the bottom of the polo. The visible label is removable.

↕ Sizes: S, M, L, XL, XXL

↗ TRS – 290 x 200 mm

30187

106

30188

108 109 154 114 134 105
111 128 103 113 183



THC Rome Women



Short-sleeved bicolour polo for women in 100% carded cotton pique (210 g/m²) (colour: 183: 85% cotton/15% viscose). Two-colour contrast on the collar, sleeve and placket. Features a collar and cuffs in Rib. Reinforced placket with 3 contrasting colour buttons (extra button inserted in the inner side seam). Fitted waist and small side vents at the hemline of the polo.

↕ Sizes: S, M, L, XL, XXL

➤ TRS – 240 x 200 mm

30138

106

30139

105 183 114 134 103 113



THC Rome



Short-sleeved bicolour polo for men in piqué 100% cotton carded (210 g/m²) (colour: 183: 85% cotton/15% viscose). Two-colour contrast on the collar, sleeve and placket. Features a collar and cuffs in Rib. Reinforced placket with 3 contrasting colour buttons (extra button inserted in the inner side seam). Fitted waist and small side vents at the hemline of the polo.

↕ Sizes: S, M, L, XL, XXL

➤ TRS – 280 x 200 mm

30136

106

30137

105 183 134 104 114 119
129 103 113



THC Bern Women



Long-sleeved polo for women in piqué 100% carded cotton (210 g/m²) (colour 183: 85% cotton/15% viscose). Rib collar reinforced with piqué knit ribbon. Features a reinforced placket with 4 matching colour buttons (extra button inserted in the inner seam). Piece cut and sewn with double seam sleeves. The visible label is removable.

↕ Sizes: S, M, L, XL, XXL

➤ TRS – 240 x 200 mm

30144

106

30145

115 105 114 134
102 103 113 183



THC Bern



Long-sleeved polo for men in piqué 100% carded cotton (210 g/m²) (colour 183: 85% cotton/15% viscose). Regular cut polo with rib collar and cuffs, the collar being reinforced with piqué knit ribbon. Contains a reinforced collar with 3 matching colour buttons (extra button inserted in the inner seam). Piece cut and sewn with side vents at the hem. The visible label is removable.

↕ Sizes: S, M, L, XL, XXL

➤ TRS – 290 x 200 mm

30140

106

30141

115 105 128 119 114
134 111 103 113 183

th
clothes
BRAND WEAR



THC London Women



Short-sleeved oxford shirt for women in 70% cotton and 30% polyester (130 g/m²). Fitted shirt with 2 darts on the back and front and double seam on the sleeve hem. Contains 7 pearl coloured buttons.

📏 Sizes: S, M, L, XL, XXL

🔪 TRS – 80 x 40 mm

30201

106

30158

103 124



THC Tokyo Women



Long-sleeved oxford shirt for women in 70% cotton and 30% polyester (130 g/m²). Contains adjustable cuffs with 2 buttons and sleeve with 1 pleat. Fitted shirt with 2 darts on the front and back, and placket with 7 pearl coloured buttons.

📏 Sizes: S, M, L, XL, XXL

🔪 TRS – 80 x 40 mm

30197

106

30154

124 103 113 115



THC Paris Women



Long-sleeved shirt for women in 68% cotton, 28% polyamide and 4% elastane (115 g/m²). Long sleeve with 1 pleat and adjustable cuffs with 1 button. Fitted waist with 2 darts on the back and placket with 7 matching colour buttons.

📏 Sizes: S, M, L, XL, XXL

🔪 TRS – 80 x 40 mm

30195

106

30152

103 124 113 115



THC Batalha Women



Popelin long-sleeved women's shirt with a pleat 35% cotton and 65% polyester (115 g/m). Contains invisible button for collar firmness, 7 matching colour buttons and adjustable cuffs with 1 button. Shirt with two back darts.

📏 Sizes: S, M, L, XL, XXL

🔪 TRS – 80 x 40 mm

30214

106

30213

103 124



THC London



Short-sleeved oxford shirt for men in 70% cotton and 30% polyester (130 g/m²). Contains double seam on sleeve cuff and chest pocket on left side. Collar with 2 buttons and placket with 7 pearl coloured buttons.

📏 Sizes: S, M, L, XL, XXL

🔪 TRS – 80 x 40 mm

30200

106

30157

124 103



THC Tokyo



Long sleeve oxford shirt for men in 70% cotton and 30% polyester (130 g/m²). Contains adjustable cuffs with 2 buttons, sleeve with 2 pleats and chest pocket on the left side. Collar with 2 buttons and placket with 7 pearl coloured buttons (except black).

📏 Sizes: S, M, L, XL, XXL

🔪 TRS – 80 x 40 mm

30196

106

30153

103 124 113 115



THC Paris



Long-sleeved men's shirt in 68% cotton, 28% polyamide and 4% elastane (115 g/m²). Long sleeve with 1 pleat and adjustable cuffs with 2 buttons. Placket with 7 buttons in matching colour.

📏 Sizes: S, M, L, XL, XXL

🔪 TRS – 80 x 40 mm

30194

106

30151

124 103 113 115



THC Batalha



Popelin long-sleeved men's shirt with a pleat 35% cotton and 65% polyester (115 g/m²). Contains invisible button for collar firmness, 7 matching colour buttons and adjustable cuffs with 1 button. Shirt with two back darts.

📏 Sizes: S, M, L, XL, XXL

🔪 TRS – 80 x 40 mm

30212

106

30211

134 124 103



THC Milan Women



Pullover with "V" neckline for women 70% cotton and 30% polyamide (220 g/m²). Contains a collar, cuffs and lower part in rib and inset sleeves.

↕ Sizes: S, M, L, XL, XXL

✂ EDB – 280 x 200 mm

30150

134 103 193

THC Milan



Pullover with "V" neckline for men 70% cotton and 30% polyamide (220 g/m²). Features a collar, cuffs and lower part in rib and inset sleeves

↕ Sizes: S, M, L, XL, XXL

✂ EDB – 280 x 200 mm

30149

103 193 134



THC Vienna



Fleece (unisex) in 100% polyester (260 g/m²) with 1/4 zip closure. Contains elastic band on the sleeves and zip guard for extra comfort.

↕ Sizes: S, M, L, XL, XXL

✂ EDB – 100 x 60 mm

30166

113 103 134 114 105



THC Gama Women



100% polyester (300 g/m²) anti-pilling high-density women's fitted fleece jacket. Coloured zipper and inner lining for greater comfort. Features zippered side pockets and flap, elastic band on sleeves, elastic drawstring at the bottom and reinforcement ribbon on the inside of the collar.

↕ Sizes: S, M, L, XL, XXL

↗ TRS – 100 x 60 mm

30259



THC Gama



100% polyester (300 g/m²) anti-pilling high-density men's fleece jacket. Coloured zipper and inner lining for greater comfort. Features zippered side pockets and flap, elastic band on the sleeves, elastic drawstring at the bottom and reinforcement ribbon on the inside of the collar.

↕ Sizes: S, M, L, XL, XXL, 3XL

↗ EDB – 100 x 60 mm

30258



THC Helsinki Women



100% polyester women's fitted fleece jacket (260 g/m²) with coloured zip and zip guard for greater comfort. Contains side pockets and elastic band on sleeves.

↕ Sizes: S, M, L, XL, XXL

↗ EDB – 100 x 60 mm

30165



THC Helsinki



100% polyester men's fleece jacket (260 g/m²) with coloured zip and zip guard for greater comfort. Contains side pockets and elastic cuffs.

↕ Sizes: S, M, L, XL, XXL

↗ EDB – 100 x 60 mm

30164





THC Budapest



Sweatshirt (unisex) 50% cotton and 50% polyester (320 g/m²) with carded interior. Features ribbon cuffs and waistband and 1/4 coloured zip.

📏 Sizes: S, M, L, XL, XXL

🔪 TRS – 90 x 60 mm



THC Delta



Sweatshirt (unisex) in 50% cotton and 50% polyester (300 g/m²) with carded interior. Features a double and rib seam on collar, cuffs and waistband. The collar includes reinforcement ribbon.

📏 Sizes: S, M, L, XL, XXL

🔪 TRS – 280 x 200 mm



THC Amsterdam



50% cotton and 50% polyester men's sweatshirt (320 g/m²) with carded interior. The hood is lined and contains colour cord closure. The front area has two marsupial pockets with plastic cover closure. Piece with cuffs and ribbon waistband.

📏 Sizes: S, M, L, XL, XXL

🔪 TRS – 100 x 60 mm

THC Amsterdam Women



50% cotton and 50% polyester women's sweatshirt (320 g/m²) with carded interior. The hood is lined and contains colour cord closure. The front area has two marsupial pockets with plastic cover closure. Piece with cuffs and ribbon waistband.

📏 Sizes: S, M, L, XL, XXL

🔪 TRS – 100 x 60 mm

30163

114 134 194 105 173 103 183

30159

169 114 134 142 168 105
115 121 178 128 109 149
129 103 113 183

30161

114 194 134 142
105 195 178 183 103

30162

105 195 178 142
114 194 134 183 103

30202

106

30256

106

30257

106



THC Moscow



Sweatshirt (unisex) 50% cotton and 50% polyester (320 g/m²) with carded interior. Features rib 1x1 cuffs and waistband, marsupial pocket and hood with contrasting colour strings.

📏 Sizes: S, M, L, XL, XXL

📏 TRS – 280 x 200 mm

30189



THC Phoenix



Hooded sweatshirt (unisex) in 50% cotton and 50% polyester (320 g/m²) with carded interior. The hood includes eyelets and fastening cord in matching colour. Sweatshirt with marsupial pocket and 1x1 Rib on the cuffs and waistband.

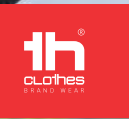
📏 Sizes: XS, S, M, L, XL, XXL

📏 TRS – 290 x 200 mm

30203



30160



THC Karachi



Cotton (80%) and recycled polyester (20%) sweatshirt (280g/m²). Environmentally friendly product.

📏 Sizes: XS, S, M, L, XL, XXL

📏 TRS – 280 x 200 mm

30285



30283





THC Liubiana



Padded parka (unisex) 100% polyester (exterior: 240 g/m² 100% polyester pongee 240 and waterproof PVC coating; interior: 65 g/m² 100% polyester taffeta; filling: 100% polyester 80 g/m²). Collar lined with black polar mesh (fastened with velcro strip). Foldable collar hood, adjustable with black stoppers. Opening with flap, coloured zip, velcro and snap buttons in black. Contains 2 outer pockets with flap and 2 inner pockets (1 for mobile phone) with velcro closure. Inner 2x2 ribbed mesh cuffs and adjustable outer cuffs with velcro straps. Thermo-sealed seams. Zippered lower back access for easy customisation.

↕ Sizes: XS, S, M, L, XL, XXL

↗ EDB - 90 x 60 mm

30183



THC Oporto



Sports jacket in 100% polyester (60 g/m²). With its modern cut, this sports jacket contains 2 front pockets and bicolour details. Zipped access at the back for easy customisation.

↕ Sizes: S, M, L, XL, XXL

↗ TRS - 280 x 200 mm

30215



THC Dublin



Taffeta windbreaker (unisex) 100% polyester (65 g/m²). Contains a hood with stoppers and net lining. Elastic with stoppers at the bottom and side pockets with plastic closure.

↕ Sizes: XS, S, M, L, XL, XXL

↗ TXP - 100 x 60 mm

30190





THC Skopje



Hooded jacket for men in 300T taffeta (95% polyester and 5% elastane) (280 g/m²). Modern cut with flattering seam on the chest. Contains hood with stoppers and inner pockets. Easy customisation area above the chest.

📏 Sizes: S, M, L, XL, XXL

🔪 TRS – 280 x 200 mm

30246

114 134 105 103



THC Brussels



Long padded parka (unisex) in 100% polyester (exterior: 75 g/m² 300T polyester pongee coating; interior: 100% polyester 50 g/m²; filling: 335g/m²). With lined and padded hood and elastic cuffs. Warm and sturdy parka with decorative topstitching, with interior and front pockets with waterproof zippers.

📏 Sizes: S, M, L, XL, XXL

🔪 EDB – 80 x 60 mm

30254

134 103



THC Eanes



96% polyester and 4% elastane (280 g/m²) softshell jacket (unisex) with two layers and water resistant coating. Fleece lined jacket with 2 front pockets and diagonal chest pocket, both zippers with rubber pullers. Adjustable cuffs with velcro strap and drawstring at the bottom.

📏 Sizes: XS, S, M, L, XL, XXL

🔪 TRS – 100 x 80 mm

30260



THC Zagreb Women



Softshell vest for women in 96% polyester and 4% elastane (280 g/m²), with two layers, removable hood and water resistant coating. Lined jacket with 2 front pockets and diagonal chest pocket, all with zips. Adjustable cuffs with velcro strap. Removable hood with drawstring and Velcro strap to attach to the collar. Rounded hem on the back.

📏 Sizes: S, M, L, XL, XXL

🔪 TRS – 100 x 60 mm

30181



THC Zagreb



Softshell men's jacket in 96% polyester and 4% elastane (280 g/m²), with two layers, removable hood and water resistant coating. Fleece lined jacket with 2 front pockets and diagonal chest pocket, all with zips. Adjustable cuffs with Velcro strap. Removable hood with drawstring and Velcro strap to attach to the collar. Rounded hem on the back.

📏 Sizes: S, M, L, XL, XXL

🔪 TRS – 100 x 60 mm

30180





THC Stockholm



Men's padded work vest in 100% oxford polyester with an acrylic coating (170 g/m²), lined in 100% taffeta polyester (65 g/m²). Fleece lined collar and elastic sides for better fit. Contains 6 pockets: 5 front pockets, including 2 with inner zip plus 1 for mobile phone, and 1 inside pocket. Zipped access at the back for easy customisation.

📏 Sizes: S, M, L, XL, XXL, 3XL

🔪 TRS – 70 x 70 mm

30177



THC Baku



Unisex softshell vest in 96% polyester and 4% elastane with two layers (280 g/m²). Water resistant vest with a back length longer than the front. Contains three pockets, two side pockets with zip, and a double welted chest pocket. Customisation area with easy access.

📏 Sizes: S, M, L, XL, XXL, 3XL

🔪 TRS – 100 x 80 mm

30252



THC Pixel



Polyester (65%) and cotton (35%) multi-pocket vest (200 g/m²) with water repellent treatment. Suitable for reporters and other field professions.

📏 Sizes: XS, S, M, L, XL, XXL

🔪 TRS – 100 x 100 mm

30270





THC Bratislava



98% cotton and 2% elastane jacket (240 g/m²). Modern cut, it contains 2 darts on the back and elastic on the wrist and waist. Buttoning done through snap buttons. Includes 2 back pockets and 1 chest pocket.

📏 Sizes: S, M, L, XL, XXL, 3XL

🔪 TRS – 80 x 80 mm

30248



THC Tallinn



98% cotton and 2% elastane trousers (240 g/m²). Contains 6 pockets: 2 side pockets with zip closure, 2 front pockets and 2 back pockets. Waist with elastic on the sides.

📏 Sizes: S, M, L, XL, XXL, 3XL

🔪 TRS – 80 x 80 mm

30247



THC Astana



Unisex padded jacket (exterior: 170 g/m² 100% polyester oxford with acrylic coating; filling: 75 g/m² 100% polyester; interior: 65 g/m² 100% polyester taffeta). Convertible to vest, with removable zippered sleeves. Contains a collar lined with polar mesh and three pockets with zipper. Zipped access at the back for easy customisation.

📏 Sizes: S, M, L, XL, XXL, 3XL

🔪 TRS – 80 x 60 mm

30251





• Reflective elements

THC Zagreb Work



High-visibility softshell jacket (class III) in 100% polyester (320 g/m²), with three layers, detachable hood and water resistant coating. Softshell jacket with fleece lining and TPU coating. Contains 2 front pockets and a diagonal chest pocket, both with zips. Adjustable cuffs with velcro strap. Removable hood with drawstring and Velcro strap to attach to the collar. Rounded hem on the back.

📏 Sizes: S, M, L, XL, XXL

🔪 TRS – 80 x 60 mm

30182

188 198



THC Minsk



Workwear smock (unisex) 20% cotton and 80% polyester (190 g/m²). Elegant and modern cut with stylised collar and 2 side pockets. Elastic cuffs and buttoning with snap buttons. Opening at the back for greater freedom of movement.

📏 Sizes: S, M, L, XL, XXL, 3XL

🔪 TRS – 100 x 100 mm

30250

106

30249

111 134 103 113



THC Warsaw



Men's trousers in 98% cotton and 2% elastane (240 g/m²). Contains 6 pockets: 2 side pockets with zip closure, 2 front pockets and 2 back pockets. Waist with elastic on the sides.

📏 Sizes: XS, S, M, L, XL, XXL

🔪 TRS – 90 x 60 mm

30178

103 113 134



THC Cargo



Polyester (65%) and cotton (35%) work trousers (200 g/m²).

📏 Sizes: S, M, L, XL, XXL

🔪 TRS – 80 x 80 mm

30272

103 113 134

th
clothes
BRAND WEAR



THC Move Kids



Polyester technical short sleeved kids shirt (150g/m²).

↕ Sizes: 4, 6, 8, 10, 12

↘ TRS – 200 x 200 mm

30276

106

30275



THC Quito



Kids' T-shirt (unisex) in 100% carded cotton jersey (150 g/m²). Contains a 1x1 Rib collar with jersey reinforcement bias tape. Cut and sewn garment, double stitched on the sleeves and hemline

↕ Sizes: 2, 4, 6, 8, 10, 12

↘ TRS – 200 x 200 mm

30168

106

30169



THC Ankara Kids



100% cotton jersey Kids' t-shirt (unisex) (190 g/m²) with carded cotton yarn. Features a 1x1 rib collar with jersey reinforcement ribbon. Piece cut and sewn with a double seam on the sleeves and hemline.

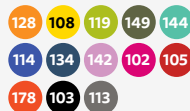
↕ Sizes: 2, 4, 6, 8, 10, 12

↘ TRS – 200 x 200 mm

30170

106

30171



THC Adam Kids



100% cotton piqué knit Kids' (unisex) short-sleeved polo (195 g/m²). Features a rib collar and sleeves and the collar is reinforced with piqué ribbon. On the front, next to the collar, there are three matching colour buttons (extra button inserted in the inner seam) and a reinforced collar. Piece cut and sewn with small side vents at the hem.

↕ Sizes: 2, 4, 6, 8, 10, 12

↘ TRS – 200 x 200 mm

30172

106

30173





THC Dublin Kids



Kids' taffeta windbreaker (unisex) 100% polyester (65 g/m²). Contains a hood with stoppers and net lining. Elastic with stoppers at the bottom and side pockets with plastic closure. The visible label is removable.

📏 Sizes: 6, 8, 10, 12, 14

✂️ TXP – 70 x 60 mm

30191



THC Phoenix Kids



Kids' hooded sweatshirt (unisex) in 50% cotton and 50% polyester (320 g/m²) with carded interior. Jersey lined hood, complying with the European Union safety standards. Sweatshirt with marsupial pocket and 1x1 Rib cuffs and waistband.

📏 Sizes: 2, 4, 6, 8, 10, 12

✂️ TRS – 200 x 200 mm

30206



30174



THC Delta Kids



Cotton (50%) and polyester (50%) children's sweatshirt (300g/m²).

📏 Sizes: 4, 6, 8, 10, 12

✂️ TRS – 200 x 200 mm

30288



30287

